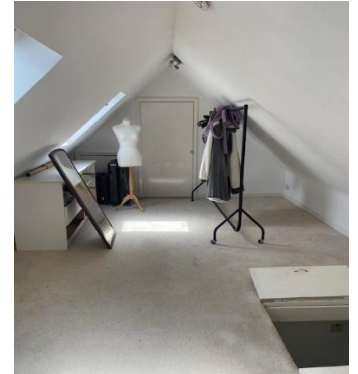


## Charming 3 bedroom Mews Cottage

- Rural location
- Mid-terrace
- East of Island near Queens Valley
- 3 bedrooms (2 doubles, 1 single)
- Fully fitted kitchen
- Shower room
- Lounge with feature fireplace
- Single garage with 1 parking space
- Separate downstairs cloakroom
- Spacious attic
- Available late August 2026 until 2<sup>nd</sup> August 2027
- £1750 pcm

**ENTITLED / LICENSED**



### 2 La Carriethe, Les Vaux, St Saviour JE2 7US

A charming mid-terrace granite cottage situated on a quiet country lane close to Queens Valley Reservoir. The property is in good condition throughout and briefly comprises: Kitchen, Living Room (with wooden flooring and feature granite fireplace), cloakroom, three bedrooms (2 double, 1 single), large attic space, single garage plus one parking space and paved patio area to the front of the property. Regret not suitable for dogs. Available late August 2026 until 2<sup>nd</sup> August 2027. Entitled / Licensed £1750 per calendar month.

PROPERTY MANAGEMENT | RENTAL NEGOTIATIONS

+44 (0) 7829 846 446 | [admin@selectpropertyjersey.co.uk](mailto:admin@selectpropertyjersey.co.uk) | [www.selectpropertyjersey.co.uk](http://www.selectpropertyjersey.co.uk)