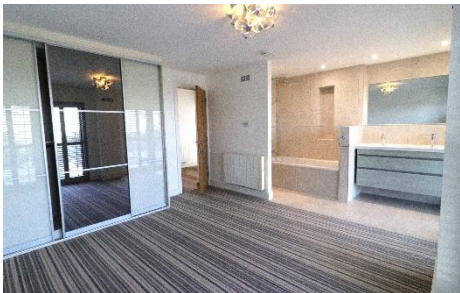


## Stunning 3 bedroom property with beautiful sea views

- Sought after central location
- Bright and spacious
- Uninterrupted sea views
- Three bedrooms
- Three bathrooms (Two en-suite)
- Open plan living
- Timber deck and garden
- Balcony
- Available immediately
- Public parking available in layby opposite

**ENTITLED / LICENSED**



### Victoria Avenue, St Helier, JE3 3LU

A beautifully presented modern luxury property situated along Victoria Avenue and boasting the most spectacular views across the whole of St Aubin's Bay. No expense has been spared on the fabulous fixtures and fittings, with the accommodation briefly comprising: Three bedrooms (2 double, 1 single/study) Three bathrooms, stunning high ceiling kitchen with separate utility. Open plan living/dining room with access to south facing balcony. Timber decking and garden to the front and rear patio with storage. Easy commute to St Helier. Available immediately. ENTITLED/LICENSED. £3350pcm.

PROPERTY MANAGEMENT | RENTAL NEGOTIATIONS

T: +44 (0) 7829 846 446 | E: [admin@selectpropertyjersey.co.uk](mailto:admin@selectpropertyjersey.co.uk) | W: [www.selectpropertyjersey.co.uk](http://www.selectpropertyjersey.co.uk)